



# **SERIES 100BE ALUMINUM FLUSH DOOR**

## **PRODUCT DATA CATALOG**

<b>CONTENTS</b>	<b>PAGE</b>
STANDARD ELEVATIONS	2
STANDARD ELEVATIONS	3
DOOR SPECIFICATIONS	4
LOUVER SPECIFICATIONS	5
GLAZING SPECIFICATIONS	5
DOOR HANDING CHART	6
CLINE STANDARD HARDWARE LOCATIONS	6
ANODIZE AND ORGANIC COATINGS	7
CLINE STANDARD HARDWARE PREPARATIONS	8
5 INCH AND 6 INCH FRAME SPECIFICATIONS	9
CAD DETAILS	10

---

Cline Aluminum Doors, Inc. reserves the right to alter dimensions or modify construction specifications to accommodate actual door sizes and/or product integrity.

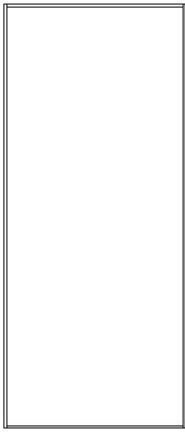
Phone: (941) 746-4104 \* (800) 648-6736 \* FAX (941) 746-5153 \* [www.clinedoors.com](http://www.clinedoors.com) \* [inquire@clinedoors.com](mailto:inquire@clinedoors.com) \* 112 32<sup>nd</sup> Avenue West - Bradenton, FL 34205



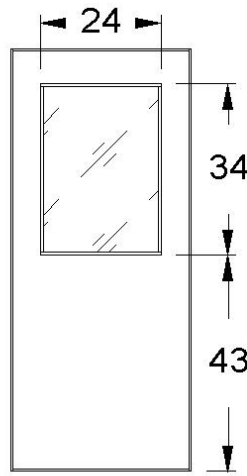
# SERIES 100BE ALUMINUM FLUSH DOOR

## ELEVATIONS

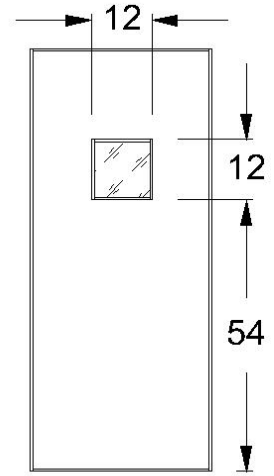
FULL FLUSH



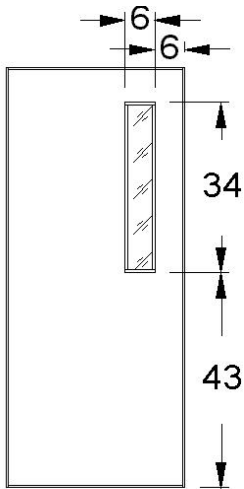
HALF GLASS



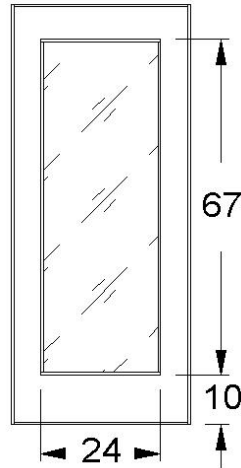
SMALL VISION LITE



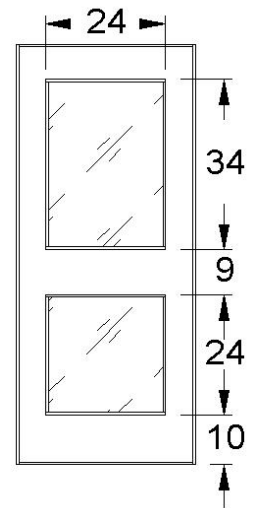
CLASSROOM VISION LITE



FULL GLASS



TOP & BOTTOM VISION LITE



LOUVER AND VISION LITE WIDTH WILL BE REDUCED TO 18 INCHES FOR DOORS LESS THAN 35 INCHES IN WIDTH

LOUVER AND VISION LITE HEIGHT WILL BE REDUCED TO 30 INCHES FOR DOORS LESS THAN 83 INCHES IN HEIGHT

Cline Aluminum Doors, Inc. reserves the right to alter dimensions or modify construction specifications to accommodate actual door sizes and/or product integrity.

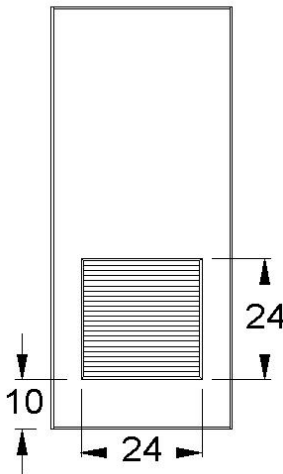
Phone: (941) 746-4104 \* (800) 648-6736 \* FAX (941) 746-5153 \* [www.clinedoors.com](http://www.clinedoors.com) \* [inquire@clinedoors.com](mailto:inquire@clinedoors.com) \* 112 32<sup>nd</sup> Avenue West - Bradenton, FL 34205



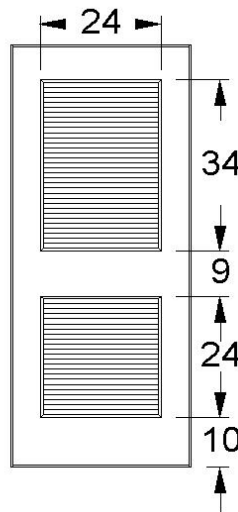
# SERIES 100BE ALUMINUM FLUSH DOOR

## ELEVATIONS

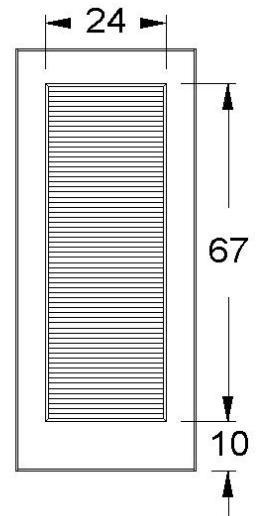
BOTTOM LOUVER



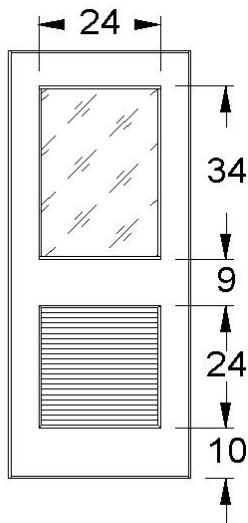
TOP AND BOTTOM LOUVER



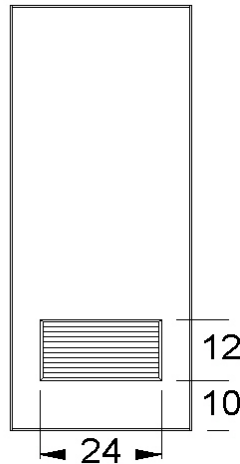
FULL LOUVER



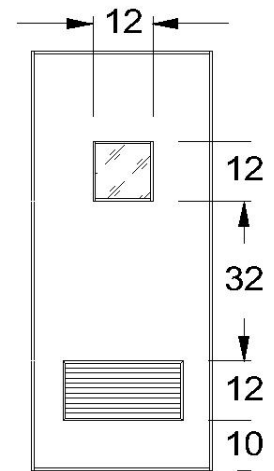
HALF GLASS BOTTOM LOUVER



SMALL BOTTOM LOUVER



SMALL VISION LITE SMALL LOUVER



LOUVER AND VISION LITE WIDTH WILL BE REDUCED TO 18 INCHES FOR DOORS LESS THAN 35 INCHES IN WIDTH

LOUVER AND VISION LITE HEIGHT WILL BE REDUCED TO 30 INCHES FOR DOORS LESS THAN 83 INCHES IN HEIGHT

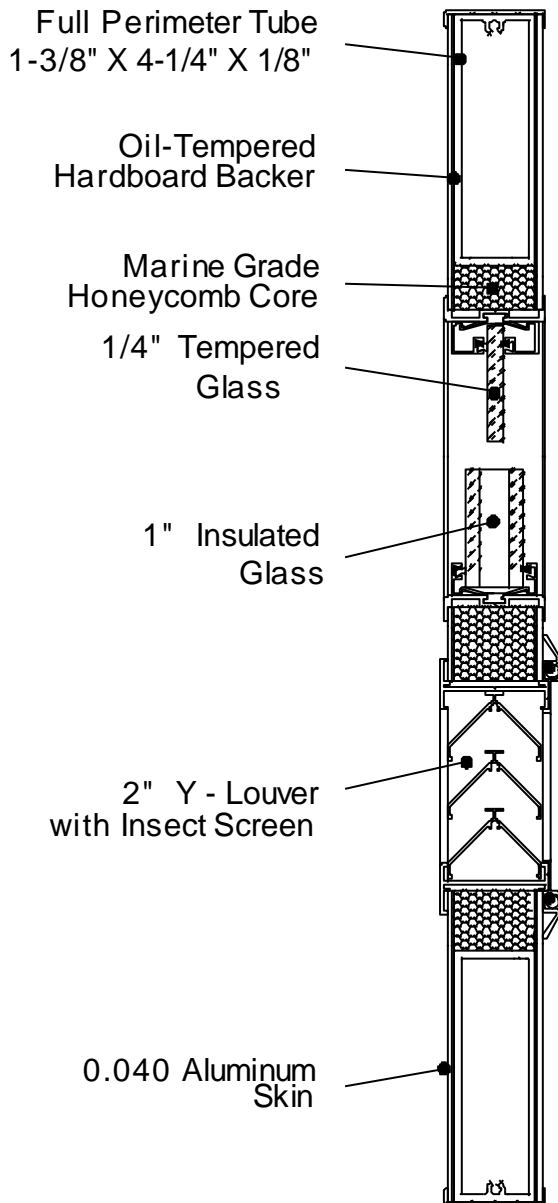
Cline Aluminum Doors, Inc. reserves the right to alter dimensions or modify construction specifications to accommodate actual door sizes and/or product integrity.

Phone: (941) 746-4104 \* (800) 648-6736 \* FAX (941) 746-5153 \* [www.clinedoors.com](http://www.clinedoors.com) \* [inquire@clinedoors.com](mailto:inquire@clinedoors.com) \* 112 32<sup>nd</sup> Avenue West - Bradenton, FL 34205



# SERIES 100BE ALUMINUM FLUSH DOOR

## SPECIFICATIONS



Aluminum heavy-duty doors shall be Cline Doors 100BE. Doors shall have a thickness of 1.75-inches (44.45mm) and be of minimum 5-ply construction with composite skin thickness of 0.125-inch (3.18mm). Exterior door ply shall be one-piece 0.040-inch (1.02mm) smooth 5005-H14 stretcher-leveled aluminum alloy facing. [Option: Exterior door ply shall be one-piece 0.040-inch (1.02mm) vertical ribbed embossed 5005-H14 stretcher-leveled aluminum alloy facing.] Facings shall be commercially bonded edge-to-edge to one-piece oil-tempered hardboard backer. Core shall be an organic based marine grade honeycomb core with high compression strength of 94.8psi (ASTM C365), and internal aluminum hardware backup tube. The hardware backup tube shall be a minimum of 4.25-inches (107.95mm) in width, 1.375-inches (34.93mm) in depth with a wall thickness of 0.125-inches (3.18mm). Internal framing members shall be mechanically joined with #10 stainless steel threaded fasteners and cross laminated. [Option: Internal framing members shall be mechanically joined with 3/8-inch (95.25mm) plated steel tie rods secured with stainless steel nylock nuts.] Door edges and face sheets shall be flush in appearance; face sheets shall be trimmed with replaceable extruded aluminum reglets of 6063-T5 alloy on perimeter edges. Lock stile shall have aluminum beveled-edge and integral wool-pile weather stripping. Hinge stile to be prepared for standard template 4.5-inch (114.30mm) x 4.5-inch (114.30mm) butt hinges. [Option: Hinge stile to be smooth to accept standard geared hinges.] Beads and trim wall thickness shall be 0.050-inch (1.27mm). Nominal door sizes shall be provided.

Standard clearances shall be:

- Hinge and lock stiles, 0.125-inch (3.18mm)
- Between meeting stiles, 0.250-inch (6.35mm)
- At top rails, 0.125-inch (3.18mm)
- Between door bottom and threshold, 0.125-inch (3.18mm).
- Bonding agents shall meet EPA requirements.

Florida Building Code #FL6336

Website address: [www.floridabuilding.org](http://www.floridabuilding.org)

Note: When used in wind-borne debris regions this product complies with section 1609.1.4 of the Florida Building Code as an impact resistant product and does not require the use of external impact resistant covering. This product meets the requirements for enhanced protection of essential facilities (missile level "E", wind zone 4) as defined in ASTM E1996.

Cline Aluminum Doors, Inc. reserves the right to alter dimensions or modify construction specifications to accommodate actual door sizes and/or product integrity.

Phone: (941) 746-4104 \* (800) 648-6736 \* FAX (941) 746-5153 \* [www.clinedoors.com](http://www.clinedoors.com) \* [inquire@clinedoors.com](mailto:inquire@clinedoors.com) \* 112 32<sup>nd</sup> Avenue West - Bradenton, FL 34205



# SERIES 100BE ALUMINUM FLUSH DOOR

## GLAZING SPECIFICATIONS

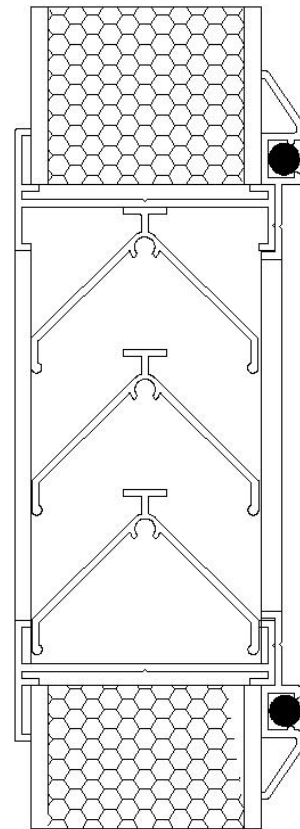
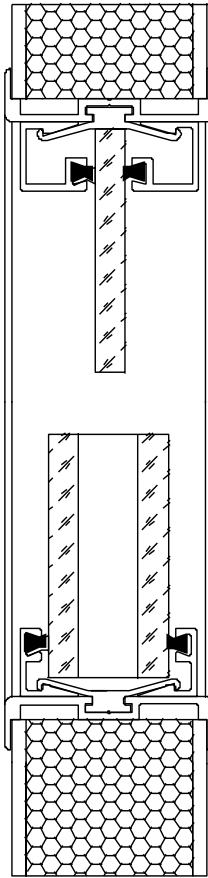
### Glazing:

Vision lites shall be glazed with 1/4-inch (6mm) thick tempered glass with snap-on non-removable stops of extruded aluminum 6063-T5, minimum thickness 0.050 inch (1.27mm). Vinyl inserts shall be used for sealing. No fasteners shall be exposed. 1-inch insulated tempered and 9/16 inch impact laminate glass optional.

## LOUVER SPECIFICATIONS

### Louvers:

Frames and blades of louvers shall be 6063-T5 aluminum alloy with a minimum 0.062 inch (1.27mm) thickness. No exposed fasteners. Insect screen shall be 18-16 mesh, 0.011 inch (0.28mm) diameter aluminum set in a 0.050 inch (1.27mm) extruded frame.



Cline Aluminum Doors, Inc. reserves the right to alter dimensions or modify construction specifications to accommodate actual door sizes and/or product integrity.

Phone: (941) 746-4104 \* (800) 648-6736 \* FAX (941) 746-5153 \* [www.clinedoors.com](http://www.clinedoors.com) \* [inquire@clinedoors.com](mailto:inquire@clinedoors.com) \* 112 32<sup>nd</sup> Avenue West - Bradenton, FL 34205



# SERIES 100BE ALUMINUM FLUSH DOOR

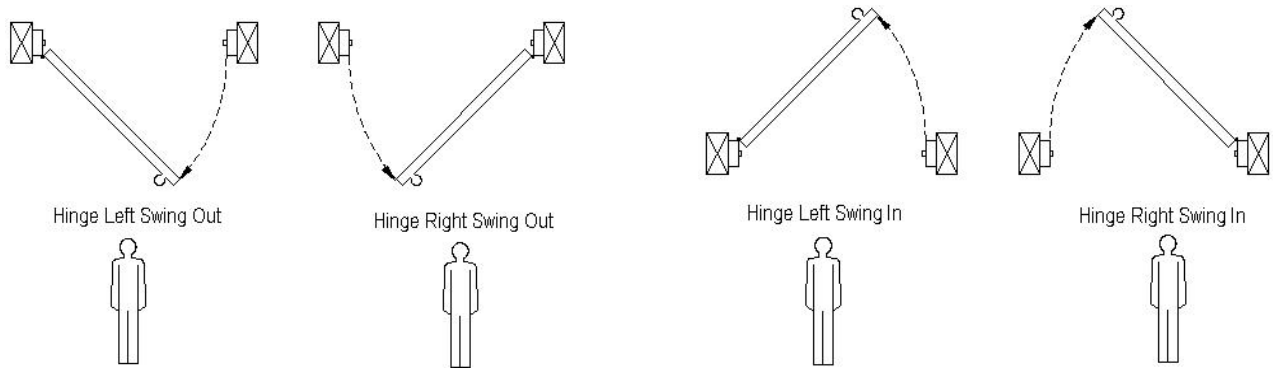
## DOOR HANDING & HARDWARE LOCATIONS

Doors shall be prepped per manufacturer's approved shop drawings. Standard preparation shall include 4 ½ X 4 ½ template hinge prep, single spindle lock prep, mortise lock edge-only prep and flush bolt prep for pairs.

Surface applied hardware shall be drilled and tapped in field by installer.

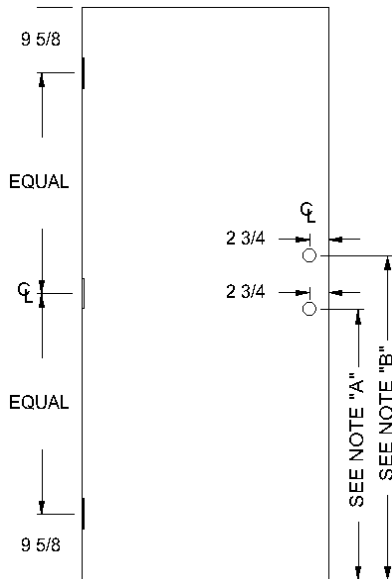
*Additional hardware preparation to be specified; concealed hardware or pivots not recommended by manufacturer.*

### DOOR HANDING



ON PAIRS OF DOORS DENOTE WHICH IS THE ACTIVE DOOR BY APPENDING THE LETTER A TO SWING

### DOOR HARDWARE LOCATION

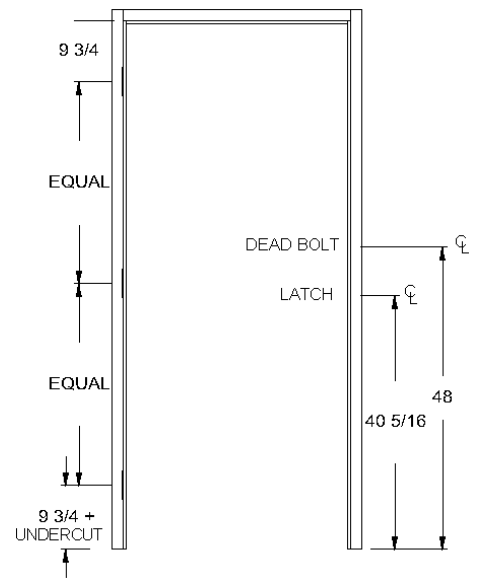


**NOTE: A**

THE CENTERLINE OF LOCK IN DOOR SHALL BE LOCATED IN REFERENCE TO THE CENTERLINE OF THE STRIKE (MORTISED LOCKS WILL BE APPROXIMATELY 3/8" (9.5 MM) BELOW CENTERLINE OF STRIKE) MINUS DOOR UNDERCUT

**NOTE: B**

THE CENTER LINE OF DEADLOCK IN DOOR SHALL BE LOCATED IN REFERENCE THE CENTERLINE OF THE FRAME STRIKE NORMALLY 48" MINUS DOOR UNDERCUT



Cline Aluminum Doors, Inc. reserves the right to alter dimensions or modify construction specifications to accommodate actual door sizes and/or product integrity.

Phone: (941) 746-4104 \* (800) 648-6736 \* FAX (941) 746-5153 \* [www.clinedoors.com](http://www.clinedoors.com) \* [inquire@clinedoors.com](mailto:inquire@clinedoors.com) \* 112 32<sup>nd</sup> Avenue West - Bradenton, FL 34205



# SERIES 100BE ALUMINUM FLUSH DOOR

## FINISHES

### ALUMINUM ANODIZED FINISHES

#### STOCK FINISHES

CLEAR ANODIZE CLASS II	AAMI2C22A31	204
DARK BRONZE CLASS I	AAMI2C22A44	444

#### OPTIONAL FINISHES

CLEAR ANODIZE	AAMI2C22A41	215
LIGHT BRONZE	AAMI2C22A44	442
MEDIUM BRONZE	AAMI2C22A44	443
BLACK	AAMI2C22A44	446

#### CLASS I

### ALUMINUM PAINTED FINISHES

Aluminum flush doors and aluminum door frames shall be finished with two-coat, shop applied, high performance, 70% Polyvinylidene Fluoride (PVDF) coating based on Kynar500 or Hylar 5000 resin, formulated by a licensed manufacturer and applied by manufacturer's approved applicator, to meet American Architectural Manufacturers Association performance standard 2605. Color variation shall be no more than 2E (CMC) when measured in accordance with MTCC 173-1989.

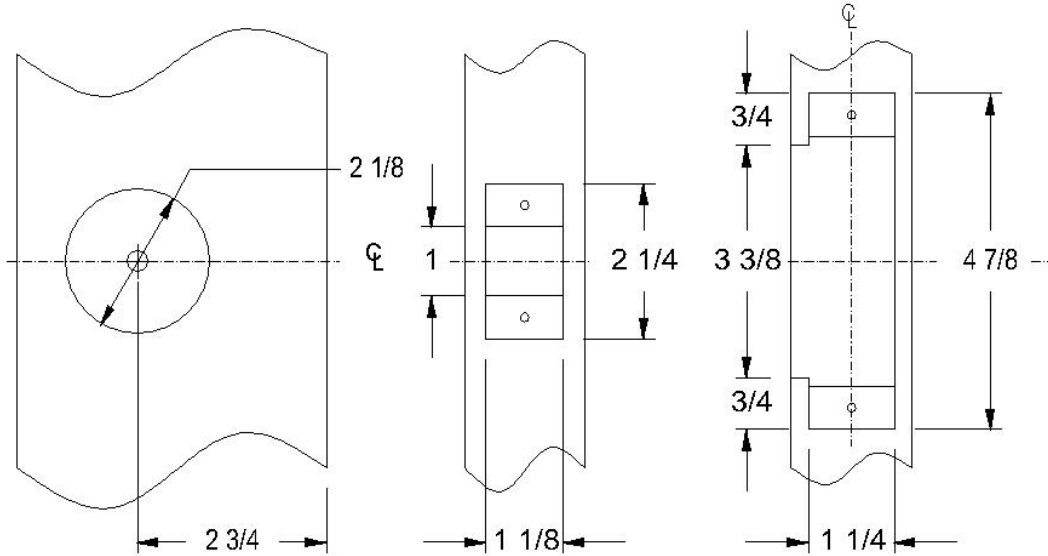
Cline Aluminum Doors, Inc. reserves the right to alter dimensions or modify construction specifications to accommodate actual door sizes and/or product integrity.

Phone: (941) 746-4104 \* (800) 648-6736 \* FAX (941) 746-5153 \* [www.clinedoors.com](http://www.clinedoors.com) \* [inquire@clinedoors.com](mailto:inquire@clinedoors.com) \* 112 32<sup>nd</sup> Avenue West - Bradenton, FL 34205

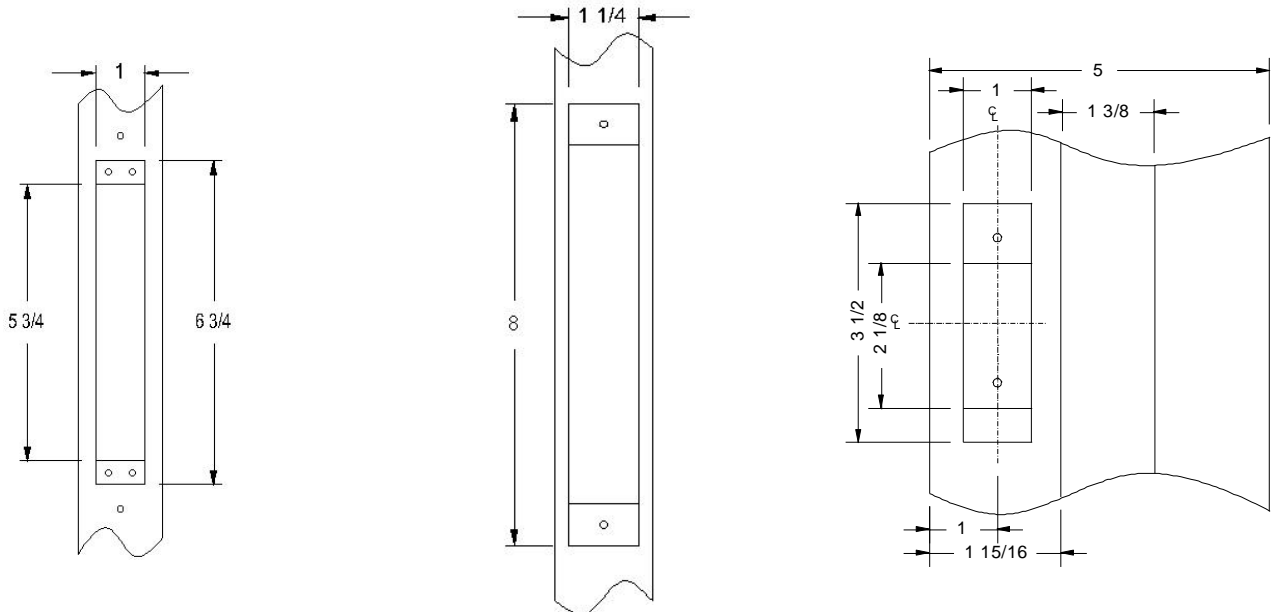


# SERIES 100BE ALUMINUM FLUSH DOOR

## STANDARD HARDWARE PREP



DOOR & FRAME PREPARATION FOR BORED OR CYLINDER LOCKS FOR 1-3/4" DOORS ANSI A115.2 - 1995



DOOR EDGE FLUSH BOLT ANSI  
STANDARD  
A115.4 - 1994

DOOR EDGE MORTISE LOCK  
PREP ANSI STANDARD A115.1

DEAD BOLT FRAME STRIKE

Cline Aluminum Doors, Inc. reserves the right to alter dimensions or modify construction specifications to accommodate actual door sizes and/or product integrity.

Phone: (941) 746-4104 \* (800) 648-6736 \* FAX (941) 746-5153 \* [www.clinedoors.com](http://www.clinedoors.com) \* [inquire@clinedoors.com](mailto:inquire@clinedoors.com) \* 112 32<sup>nd</sup> Avenue West - Bradenton, FL 34205





# SERIES 100BE ALUMINUM FLUSH DOOR

## ALUMINUM FRAMES

### SPECIFICATION FOR 5-INCH AND 6-INCH ALUMINUM FRAMES

Aluminum heavy-duty frames shall be Cline Open Back with Applied Stop (OBS). Frames shall be constructed from extruded aluminum 6063-T5 alloy with a minimum wall thickness of 0.125-inch (3.17mm), 1-3/4-inches (44.45mm) x 5-inches (127mm). Corners shall be cut square and fastened using concealed stainless steel screws. Snap-in door stop to receive replaceable wool pile weather-stripping. Hinge and strike mounting plates shall be of 0.1875-inch (4.76mm) extruded aluminum bar stock.

**FRAME HARDWARE PREPARATION:** Hinge and strike plates shall be fully mortised in frame. Hinges shall be prepared for standard weight 4-1/2-inch x 4-1/2-inch (114.3mm) template hinge. Lock strikes shall be 4 7/8 inches (123.84mm) in accordance with ANSI standards A115.1 or 115.2. All surface applied hardware shall be drilled and tapped in the field by installer.

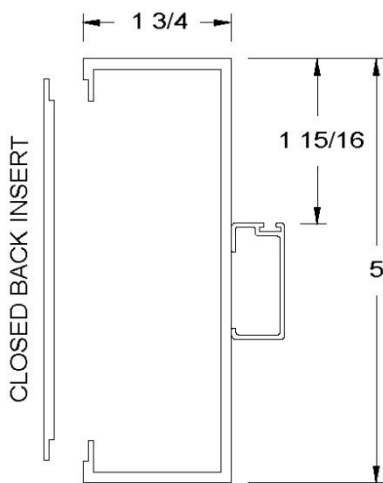
All frames shall be anodized in accordance with Aluminum Associations #AAM12C22A31, Class II, Clear 0.4-mil (0.01 mm) minimum thickness unless otherwise specified.

*Special hardware preparation available upon request.*

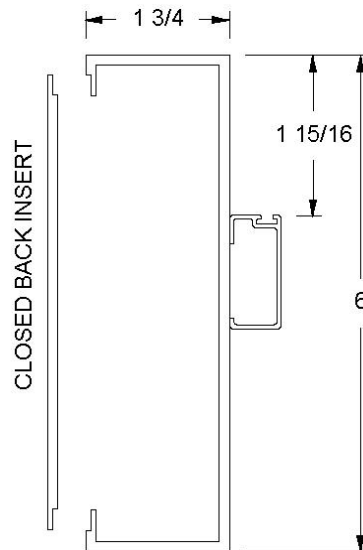
*Frame option of Cline 6-inch (152.39 mm) OBS frame, 5-inch (127mm) TS, or 6-inch (152.39mm) TS to be specified.*

### ALUMINUM FRAME CROSS SECTION

5-INCH FRAME WITH OPTIONAL INSERT



6-INCH FRAME WITH OPTIONAL INSERT

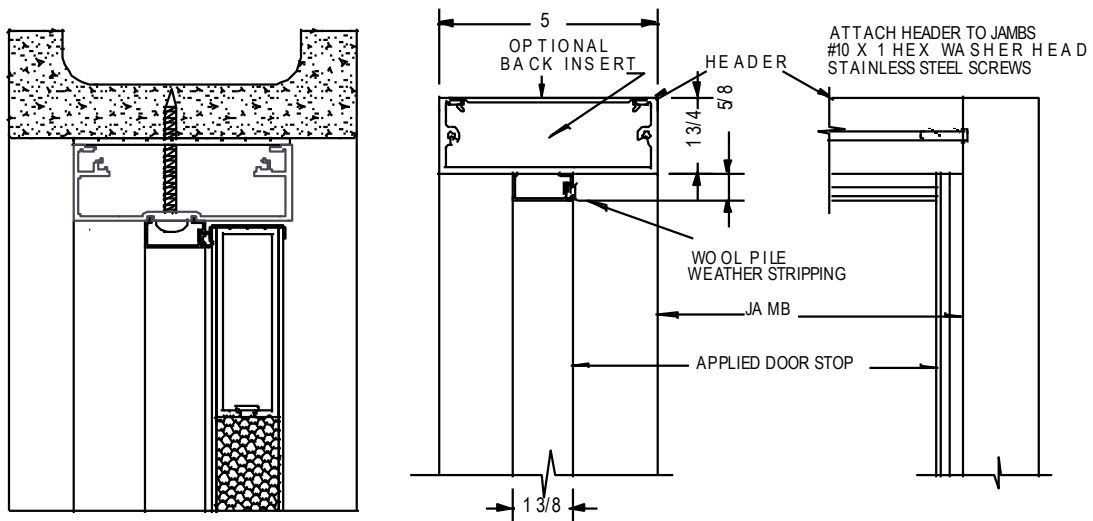
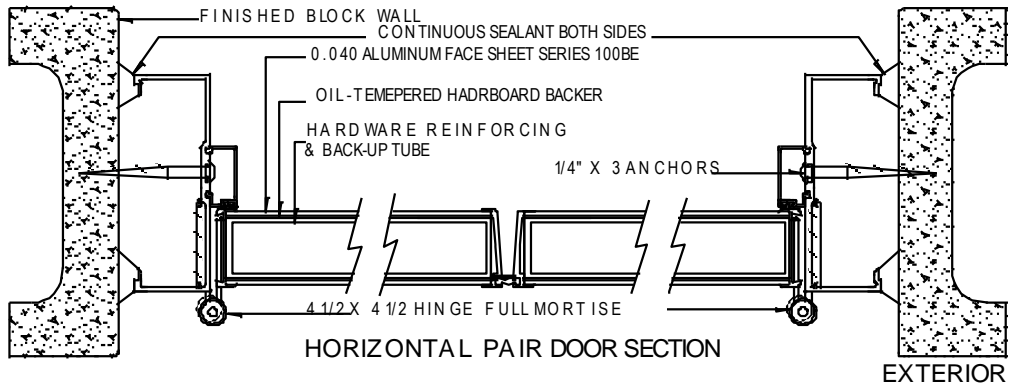
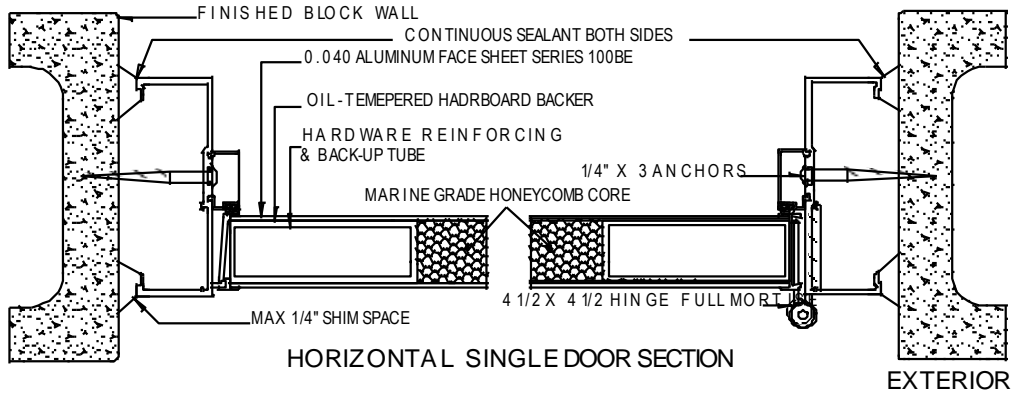


Cline Aluminum Doors, Inc. reserves the right to alter dimensions or modify construction specifications to accommodate actual door sizes and/or product integrity.

Phone: (941) 746-4104 \* (800) 648-6736 \* FAX (941) 746-5153 \* [www.clinedoors.com](http://www.clinedoors.com) \* [inquire@clinedoors.com](mailto:inquire@clinedoors.com) \* 112 32<sup>nd</sup> Avenue West - Bradenton, FL 34205



# SERIES 100BE ALUMINUM FLUSH DOOR



Cline Aluminum Doors, Inc. reserves the right to alter dimensions or modify construction specifications to accommodate actual door sizes and/or product integrity.

Phone: (941) 746-4104 \* (800) 648-6736 \* FAX (941) 746-5153 \* [www.clinedoors.com](http://www.clinedoors.com) \* [inquire@clinedoors.com](mailto:inquire@clinedoors.com) \* 112 32<sup>nd</sup> Avenue West - Bradenton, FL 34205