



SERIES 500SE

ALUMINUM STILE & RAIL DOOR

PRODUCT DATA CATALOG

CONTENTS	PAGE
STANDARD ELEVATIONS	2
STANDARD ELEVATIONS	3
DOOR SPECIFICATIONS	4
LOUVER SPECIFICATIONS	5
GLAZING SPECIFICATIONS	5
DOOR HANDING CHART	6
CLINE STANDARD HARDWARE LOCATIONS	6
ANODIZE AND ORGANIC COATINGS	7
CLINE STANDARD HARDWARE PREPARATIONS	8
5-INCH AND 6-INCH FRAME SPECIFICATIONS	9
CAD DETAILS	10

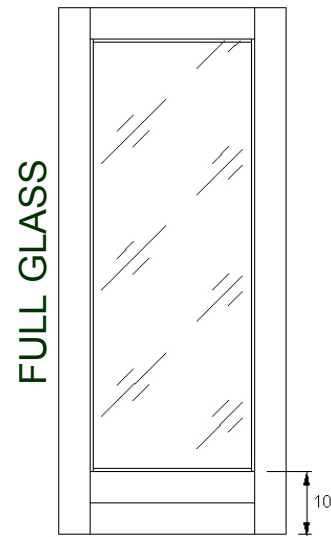
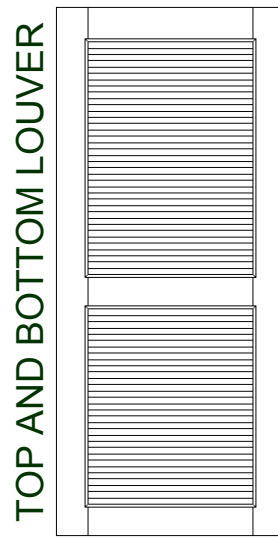
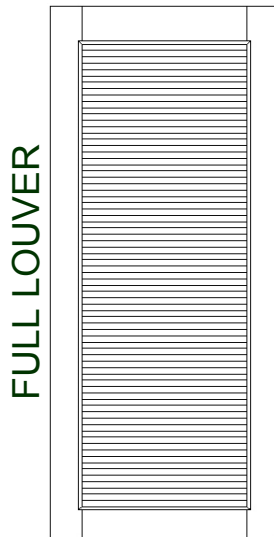
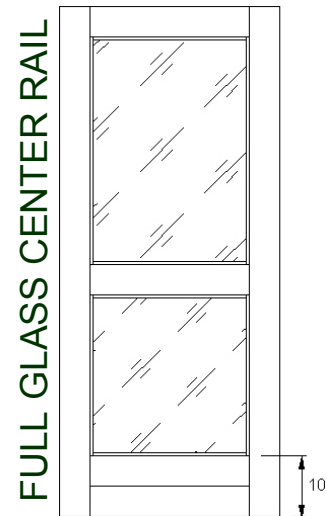
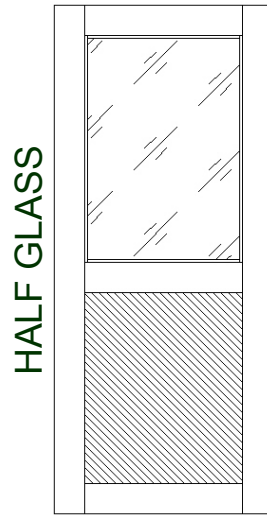
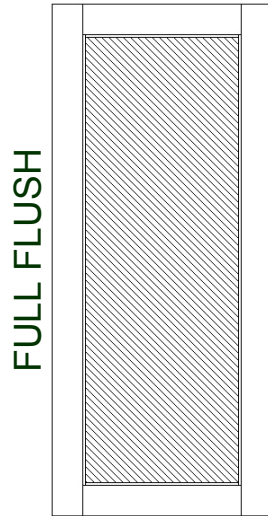
Cline Aluminum Doors, Inc. reserves the right to alter dimensions or modify construction specifications to accommodate actual door sizes and/or product integrity.

Phone: (941) 746-4104 * (800) 648-6736 * FAX (941) 746-5153 * www.clinedoors.com * inquire@clinedoors.com * 112 32nd Avenue West - Bradenton, FL 34205



SERIES 500SE ALUMINUM STILE & RAIL DOOR

ELEVATIONS



Cline Aluminum Doors, Inc. reserves the right to alter dimensions or modify construction specifications to accommodate actual door sizes and/or product integrity.

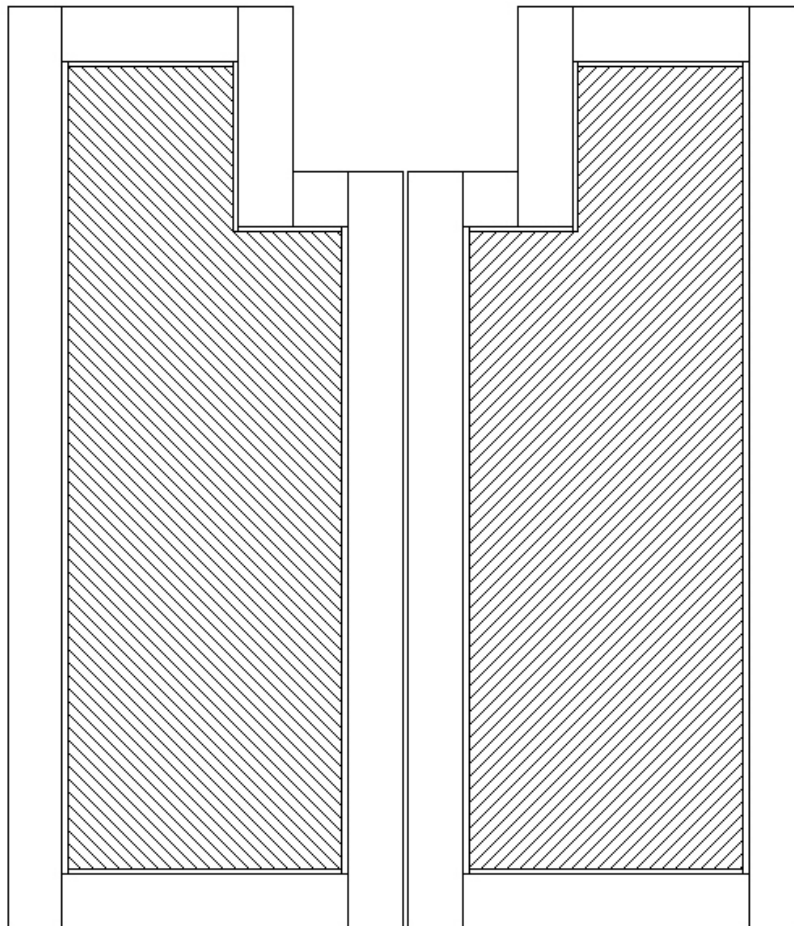
Phone: (941) 746-4104 * (800) 648-6736 * FAX (941) 746-5153 * www.clinedoors.com * inquire@clinedoors.com * 112 32nd Avenue West - Bradenton, FL 34205



SERIES 500SE

ALUMINUM STILE & RAIL DOOR

ELEVATIONS



Full Flush with Monorail Cut Out

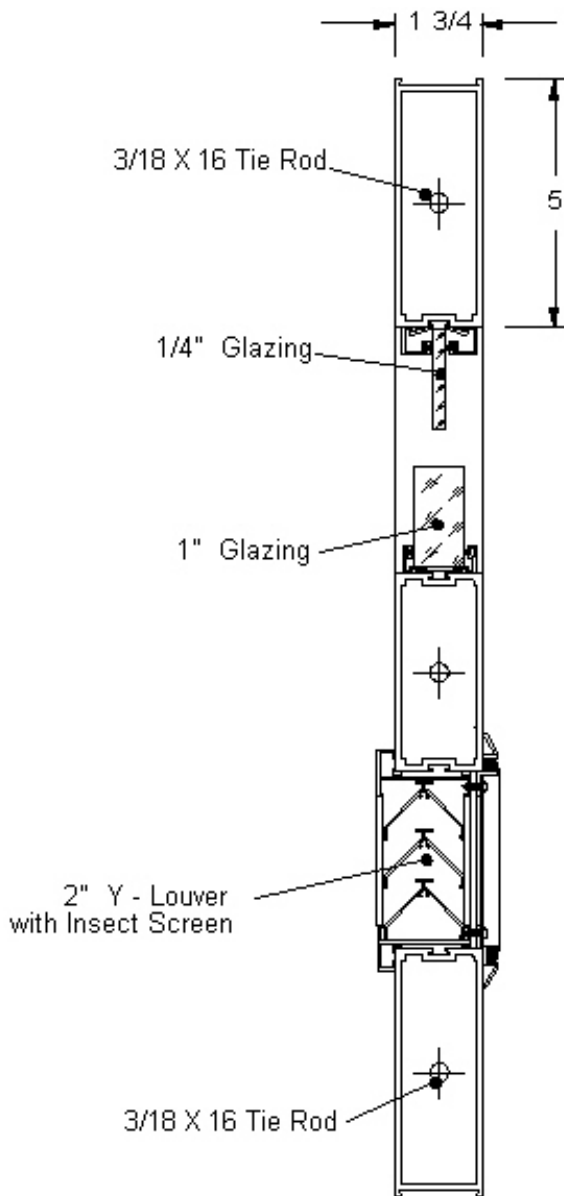
Cline Aluminum Doors, Inc. reserves the right to alter dimensions or modify construction specifications to accommodate actual door sizes and/or product integrity.

Phone: (941) 746-4104 * (800) 648-6736 * FAX (941) 746-5153 * www.clinedoors.com * inquire@clinedoors.com * 112 32nd Avenue West - Bradenton, FL 34205



SERIES 500SE ALUMINUM STILE & RAIL DOOR

SPECIFICATIONS



CONSTRUCTION SPECIFICATIONS

Aluminum Heavy-Duty Tubular Doors shall be Cline Series 500SE. Doors shall be a minimum thickness of 1 3/4 inches (44.45 mm) x 5-inch (127.0 mm) 6063-T5 aluminum alloy with 0.125-inch (3.17 mm) minimum wall thickness and shall be fabricated with 3/8-inch plated steel through bolts in rails. Lock stile shall have integral wool pile weather-strip seal. All exposed fasteners shall be 18-8 stainless steel. Nominal doors sizes shall be provided standard clearances: hinge and lock stiles, 0.125-inch (3.17 mm); between meeting stiles, 0.250-inch (6.35 mm); at top rails, 0.125-inch (3.17 mm); and between door bottom and threshold, 0.125-inch (3.17 mm).

Aluminum Flush Insert Panels shall be a minimum thickness of 1.75-inches (44.45mm) and a minimum 5-ply construction with an aluminum composite skin thickness of 0.125-inch (3.18mm). Panel facing shall be a composite, Facing: One-piece 0.040-inch (1.02 mm) smooth skins (optional vertically ribbed embossed pattern) 5005-H14 stretcher-leveled aluminum alloy. Substrate: One-piece 0.085-inch (2.16 mm) oil-tempered hardboard. Core shall be a minimum 5-pound EPS foam, pre-stabilized, free of chlorofluorocarbons (CFC) / Hydro Chlorofluorocarbons (HCFC), bilaterally bonded to composite structure facings. Bonding agents shall meet EPA requirements.

FRP Flush Insert Panels be a minimum thickness of 1.75-inches (44.45mm) and a minimum 5-ply construction with a FRP composite skin thickness of 0.125-inch (3.18mm). Door facing shall be a composite, UV inhibited, glass fiber laminate (FRP) with a pebble-like, white embossed pattern. Reinforced polyester plastic panels shall meet or exceed allowances per ASTM D3841. FRP face sheets shall have a Class-A fire rating with a smoke generation of no greater than 450 and a flame spread of no greater than 25. Core liner shall be a 0.032-inch (2.16 mm) aluminum sheet, in compliance with IBC Section 2603.4.1.7. Core shall be a minimum 5-pound EPS Foam, pre-stabilized, free of chlorofluorocarbons (CFC) / Hydro Chlorofluorocarbons (HCFC), bilaterally bonded to composite structure facings

Cline Aluminum Doors, Inc. reserves the right to alter dimensions or modify construction specifications to accommodate actual door sizes and/or product integrity.

Phone: (941) 746-4104 * (800) 648-6736 * FAX (941) 746-5153 * www.clinedoors.com * inquire@clinedoors.com * 112 32nd Avenue West - Bradenton, FL 34205



SERIES 500SE ALUMINUM STILE & RAIL DOOR

GLAZING SPECIFICATIONS

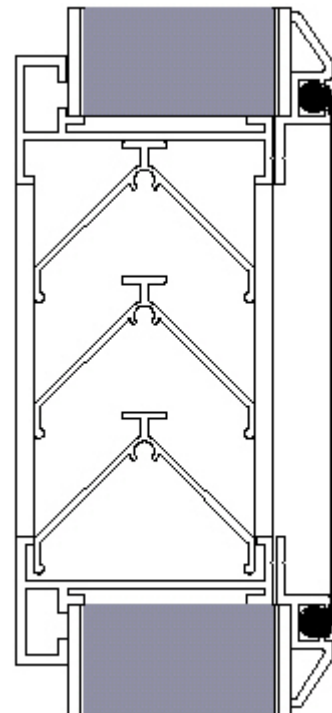
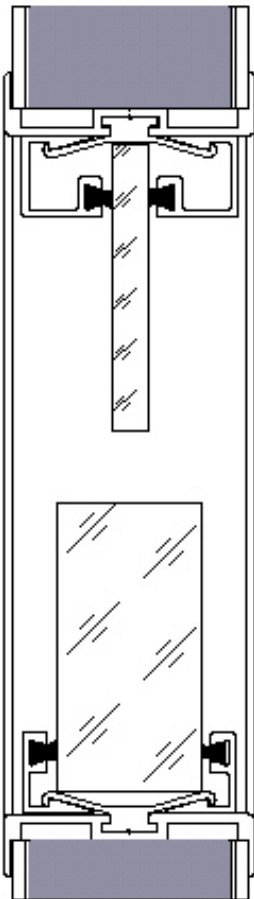
Glazing:

Vision lites shall be glazed with 1/4-inch (6mm) thick glass with snap-on non-removable stops of extruded aluminum 6063-T5, minimum thickness 0.050 inch (1.27mm). Vinyl inserts shall be used for sealing. No fasteners shall be exposed. 1-inch tempered and 9/16 inch impact laminate glass optional.

LOUVER SPECIFICATIONS

Louvers:

Frames and blades of louvers shall be 6063-T5 aluminum alloy with a minimum 0.050 inch (1.27mm) thickness. No exposed fasteners. Insect screen shall be 14-18 mesh, 0.011 inch (0.28mm) diameter alclad aluminum set in a 0.050 inch (1.27mm) extruded frame.



Cline Aluminum Doors, Inc. reserves the right to alter dimensions or modify construction specifications to accommodate actual door sizes and/or product integrity.

Phone: (941) 746-4104 * (800) 648-6736 * FAX (941) 746-5153 * www.clinedoors.com * inquire@clinedoors.com * 112 32nd Avenue West - Bradenton, FL 34205



SERIES 500SE ALUMINUM STILE & RAIL DOOR

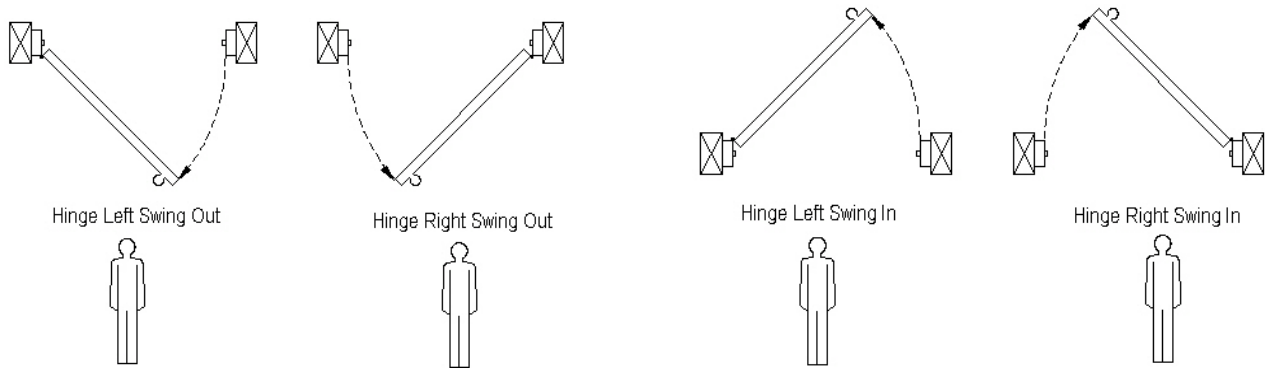
DOOR HANDING & HARDWARE LOCATIONS

Doors shall be prepped per manufacturer's approved shop drawings. Standard preparation shall include full mortise 4-1/2 X 4-1/2 template butt hinge prep, single spindle lock prep, mortise lock edge-only prep and flush bolt prep for pairs.

Surface applied hardware shall be drilled and tapped in field by installer.

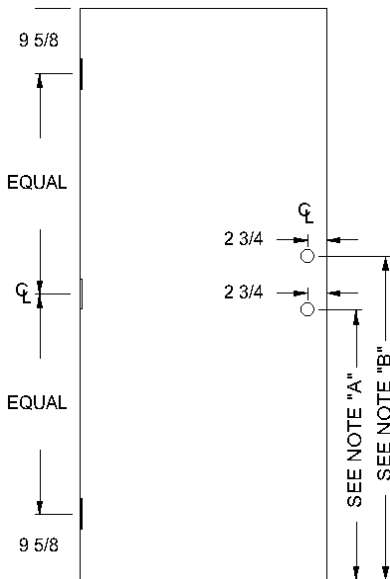
Additional hardware preparation to be specified; concealed hardware or pivots not recommended by manufacturer.

DOOR HANDING



ON PAIRS OF DOORS DENOTE WHICH IS THE ACTIVE DOOR BY APPENDING THE LETTER A TO SWING

DOOR HARDWARE LOCATION

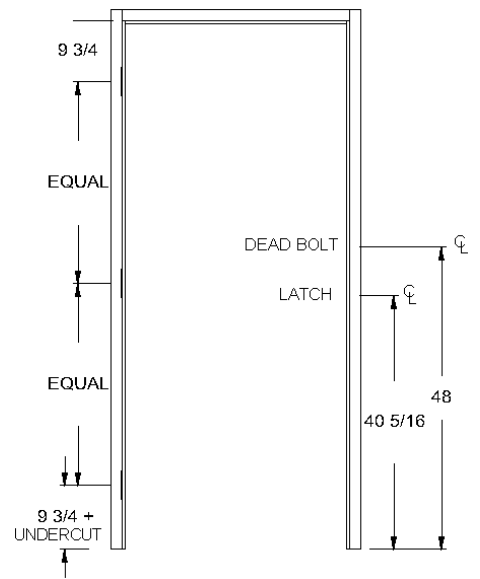


NOTE: A

THE CENTERLINE OF LOCK IN DOOR SHALL BE LOCATED IN REFERENCE TO THE CENTERLINE OF THE STRIKE (MORTISED LOCKS WILL BE APPROXIMATELY 3/8" (9.5 MM) BELOW CENTERLINE OF STRIKE) MINUS DOOR UNDERCUT

NOTE: B

THE CENTER LINE OF DEADLOCK IN DOOR SHALL BE LOCATED IN REFERENCE THE CENTERLINE OF THE FRAME STRIKE NORMALLY 48" MINUS DOOR UNDERCUT



Cline Aluminum Doors, Inc. reserves the right to alter dimensions or modify construction specifications to accommodate actual door sizes and/or product integrity.

Phone: (941) 746-4104 * (800) 648-6736 * FAX (941) 746-5153 * www.clinedoors.com * inquire@clinedoors.com * 112 32nd Avenue West - Bradenton, FL 34205



SERIES 500SE ALUMINUM STILE & RAIL DOOR

FINISHES

ALUMINUM ANODIZED FINISHES

STOCK FINISHES

CLEAR ANODIZE CLASS II	AAMI2C22A31	204
DARK BRONZE CLASS I	AAMI2C22A44	444

OPTIONAL FINISHES

CLEAR ANODIZE	AAMI2C22A41	215
LIGHT BRONZE	AAMI2C22A44	442
MEDIUM BRONZE	AAMI2C22A44	443
BLACK	AAMI2C22A44	446

CLASS I

ALUMINUM PAINTED FINISHES

Aluminum flush doors and aluminum door frames shall be finished with two-coat, shop applied, high performance, 70% Polyvinylidene Fluoride (PVDF) coating based on Kynar500@ or Hylar 5000@ resin, formulated by a licensed manufacturer and applied by manufacturer's approved applicator, to meet American Architectural Manufacturers Association performance standard 2605. Color variation shall be no more than 2E (CMC) when measured in accordance with MTCC 173-1989.

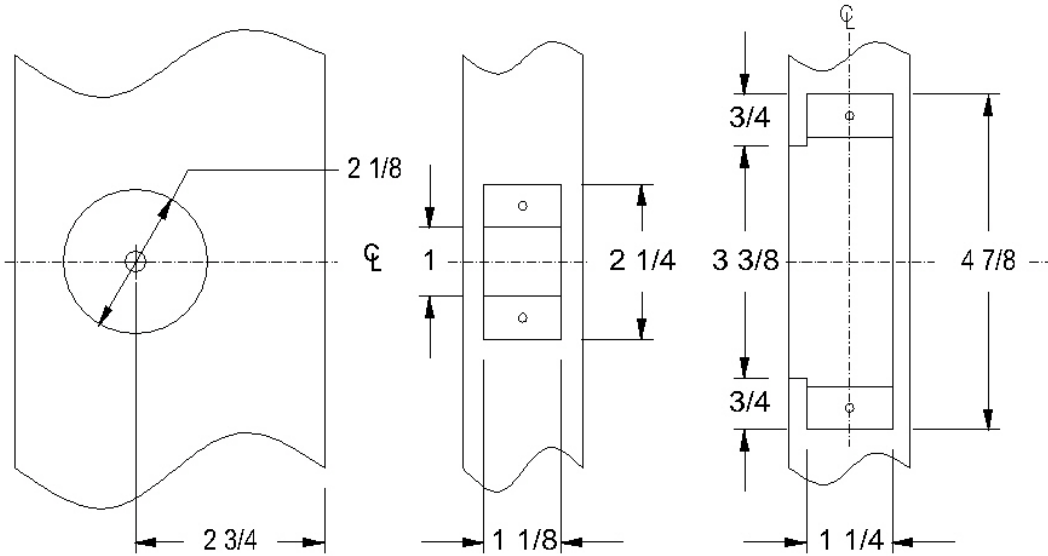
Cline Aluminum Doors, Inc. reserves the right to alter dimensions or modify construction specifications to accommodate actual door sizes and/or product integrity.

Phone: (941) 746-4104 * (800) 648-6736 * FAX (941) 746-5153 * www.clinedoors.com * inquire@clinedoors.com * 112 32nd Avenue West - Bradenton, FL 34205

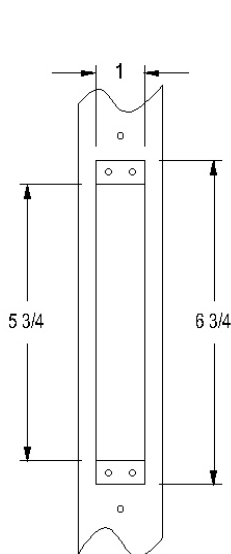


SERIES 500SE ALUMINUM STILE & RAIL DOOR

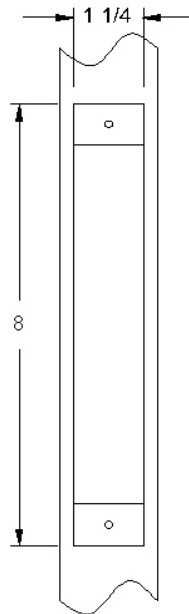
STANDARD HARDWARE PREP



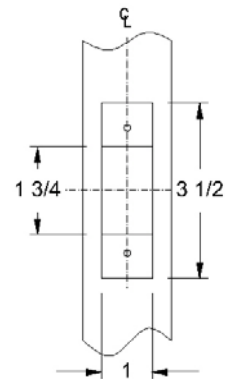
DOOR & FRAME PREPARATION FOR BORED OR CYLINDER LOCKS FOR 1-3/4" DOORS ANSI A115.2 - 1995



DOOR EDGE FLUSH BOLT ANSI
STANDARD
A115.4 - 1994



DOOR EDGE MORTISE LOCK
PREP ANSI STANDARD A115.1



DEAD BOLT FRAME STRIKE

Cline Aluminum Doors, Inc. reserves the right to alter dimensions or modify construction specifications to accommodate actual door sizes and/or product integrity.

Phone: (941) 746-4104 * (800) 648-6736 * FAX (941) 746-5153 * www.clinedoors.com * inquire@clinedoors.com * 112 32nd Avenue West - Bradenton, FL 34205



SERIES 500SE ALUMINUM STILE & RAIL DOOR

ALUMINUM FRAMES

SPECIFICATION FOR 5-INCH AND 6-INCH ALUMINUM FRAMES

Aluminum heavy-duty frames shall be Cline Open Back with Applied Stop (OBS). Frames shall be constructed from extruded aluminum 6063-T5 alloy with a minimum wall thickness of 0.125-inch (3.17mm), 1-3/4-inches (44.45mm) x 5-inches (127mm). Corners shall be cut square and fastened using concealed stainless steel screws. Snap-in door stop to receive replaceable wool pile weather-stripping. Hinge and strike mounting plates shall be of 0.1875-inch (4.76mm) extruded aluminum bar stock.

FRAME HARDWARE PREPARATION: Hinge and strike plates shall be fully mortised in frame. Hinges shall be prepared for standard weight 4-1/2-inch x 4-1/2-inch (114.3mm) template hinge. Lock strikes shall be 4 7/8 inches (123.84mm) in accordance with ANSI standards A115.1 or 115.2. All surface applied hardware shall be drilled and tapped in the field by installer.

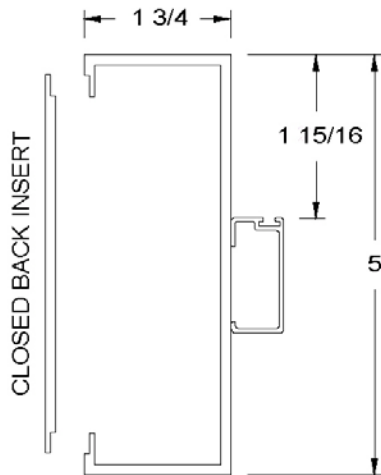
All frames shall be anodized in accordance with Aluminum Associations #MM12C22A31, Class II, Clear mil (0.01 mm) minimum thickness unless otherwise specified.

Special hardware preparation available upon request.

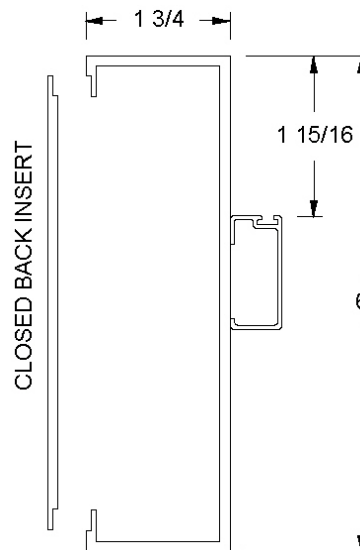
Frame option of Cline 6-inch (152.39 mm) OBS frame, 5-inch (127mm) TS, or 6-inch (152.39mm) TS to be specified.

ALUMINUM FRAME CROSS SECTION

5-INCH FRAME WITH OPTIONAL INSERT



6-INCH FRAME WITH OPTIONAL INSERT



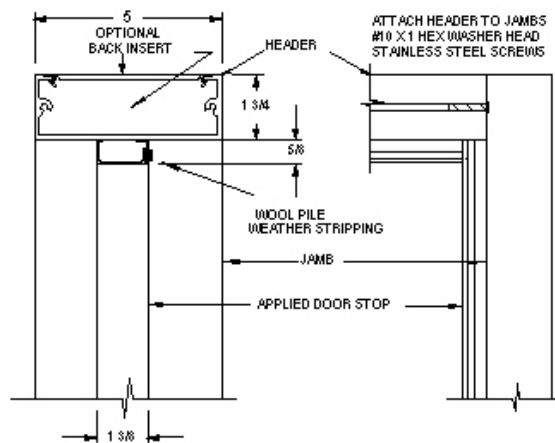
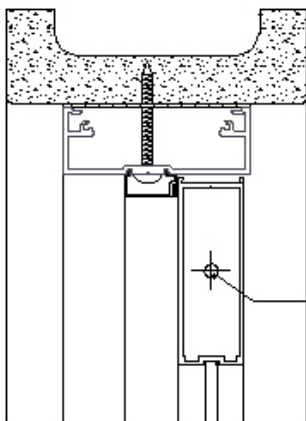
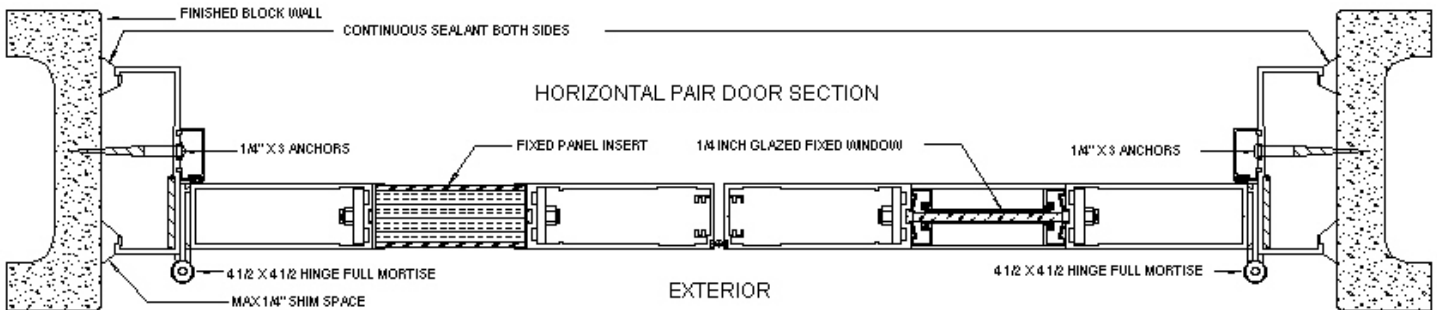
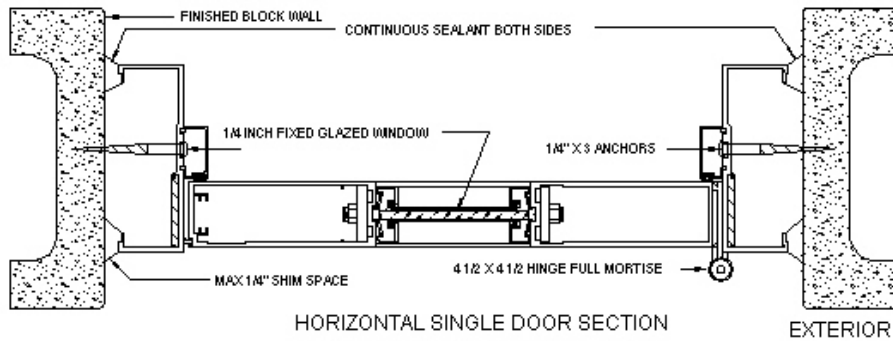
Cline Aluminum Doors, Inc. reserves the right to alter dimensions or modify construction specifications to accommodate actual door sizes and/or product integrity.

Phone: (941) 746-4104 * (800) 648-6736 * FAX (941) 746-5153 * www.clinedoors.com * inquire@clinedoors.com * 112 32nd Avenue West - Bradenton, FL 34205



SERIES 500SE ALUMINUM STILE & RAIL DOOR

CAD DETAILS



Cline Aluminum Doors, Inc. reserves the right to alter dimensions or modify construction specifications to accommodate actual door sizes and/or product integrity.

Phone: (941) 746-4104 * (800) 648-6736 * FAX (941) 746-5153 * www.clinedoors.com * inquire@clinedoors.com * 112 32nd Avenue West - Bradenton, FL 34205