



Impact Test

Series 100BE Aluminum Flush Doors
Series 200BE FRP School Doors

Hurricane Rated and Florida Approved!

Cline Doors is proud to announce we are the new standard for your flush door hurricane conditions, offering both single and double door openings. Cline has passed large missile impact testing level-D, along with an industry leading design pressure of ±90 psf for your structural strength requirements. High Velocity Hurricane Zones are also no match for our flush aluminum doors. Amazingly, no door structural modifications are needed to achieve these test results. Along with superior performance, Cline Doors also provides your project valuable LEED points for Green construction. With over 50 years of door building experience, you can trust Cline for all your hurricane rated door needs.

Opening Sizes Tested

Singles up to 36" x 86"
Pairs up to 72" x 86"

Singles up to 48" x 96"
Pairs up to 96" x 96"

Designed Pressure

±90 psf

±80 psf

Vision Lites

24" x 34"

36" x 46"

3/16" SentryGlas Plus with 0.090" Interlayer

Frames

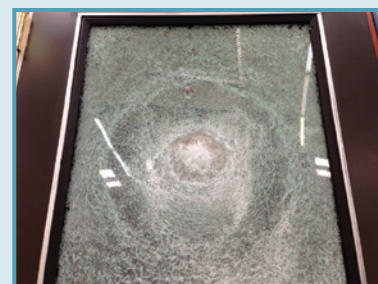
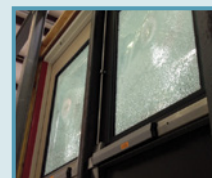
1 3/4" x 5" Immediate Framing with Snap-in Doorstop

Hardware Configuration

- Yale 7180 (F)TD 3-Point SVR
- Pemko 345AV Bottom Door Sweep
- Yale M200WS Removable Mullion
Pair requirement only
- Pemko 171A Threshold

Additional cylindrical lock and deadlock option available. Please contact us to inquire.

Images from the testing lab



Cline Aluminum Doors, Inc.
112 32nd Avenue West
Bradenton, Florida 34205

Office: (941) 746-4104
Fax: (941) 746-5153
Toll Free: 1-800-648-6736



Visit us online:
www.ClineDoors.com

Send us an email:
Inquire@ClineDoors.com

Custom Aluminum Doors and Frames Since 1961